

# Stichting Bouwen (The Gambia)

Coastal Road • Sanyang • The Gambia

tel.: +220 7564201 gambia@stichtingbouwen.nl www.stichtingbouwen.nl

Project:

**Lower Basic School**  
Aljamdu, The Gambia

Subject:

**Construction drawing**  
3 classrooms, 1 office, 1 store

Client:

**FUN Foundation**  
Albatrospad 125, 1021 TR Amsterdam, The Netherlands

Projectnumber:

**2017-201**

Papernumber:

**WT01**

Scale:

**1:100**

Format:

**A4**

last date:

Draughtsman: **PSc**

Ch.G .....

Ch.C .....

Ch.F .....

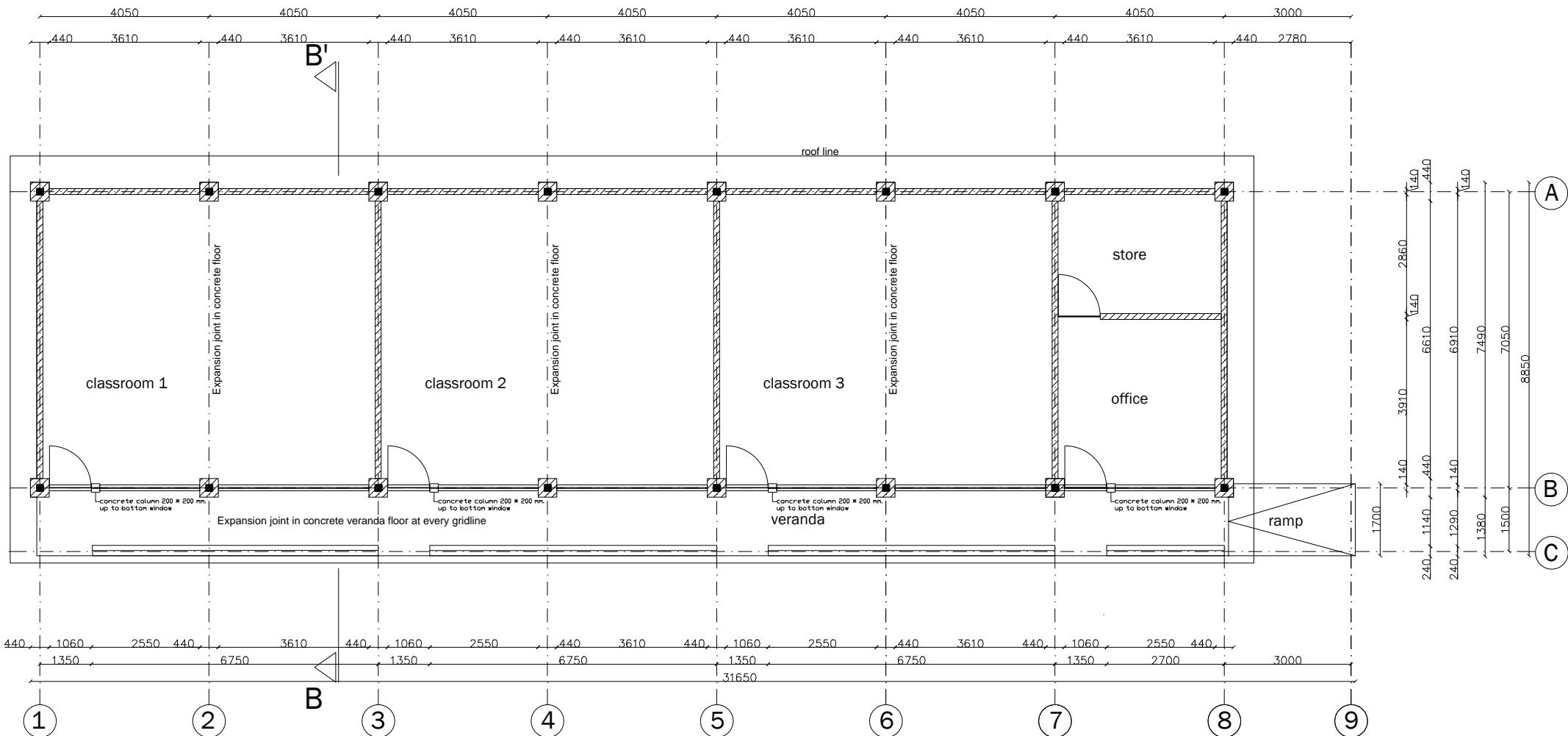
Ch.B .....

Ch.E .....

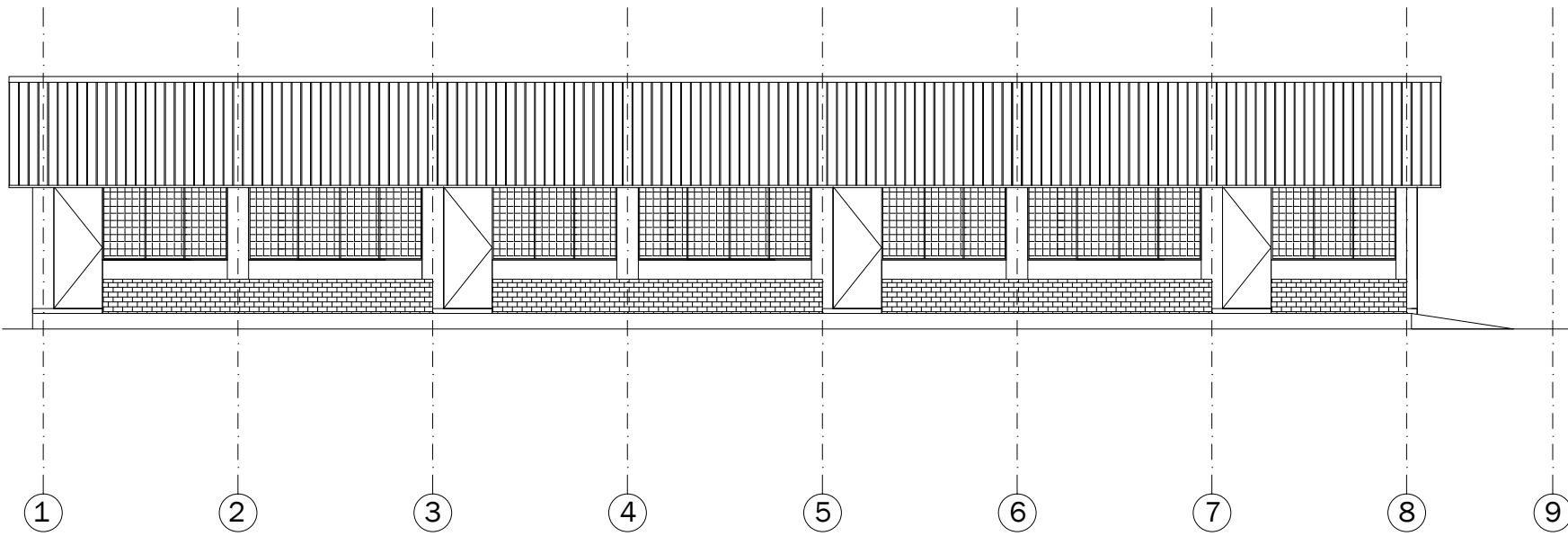
Ch.A .....

Ch.D .....

start **19-12-2018**

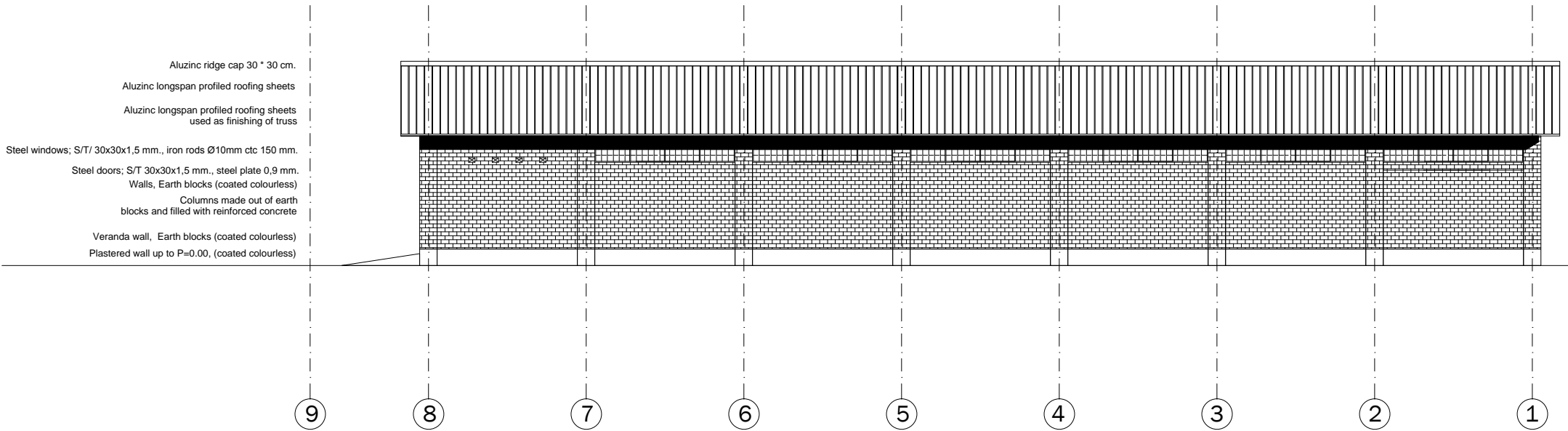


PLAN VIEW



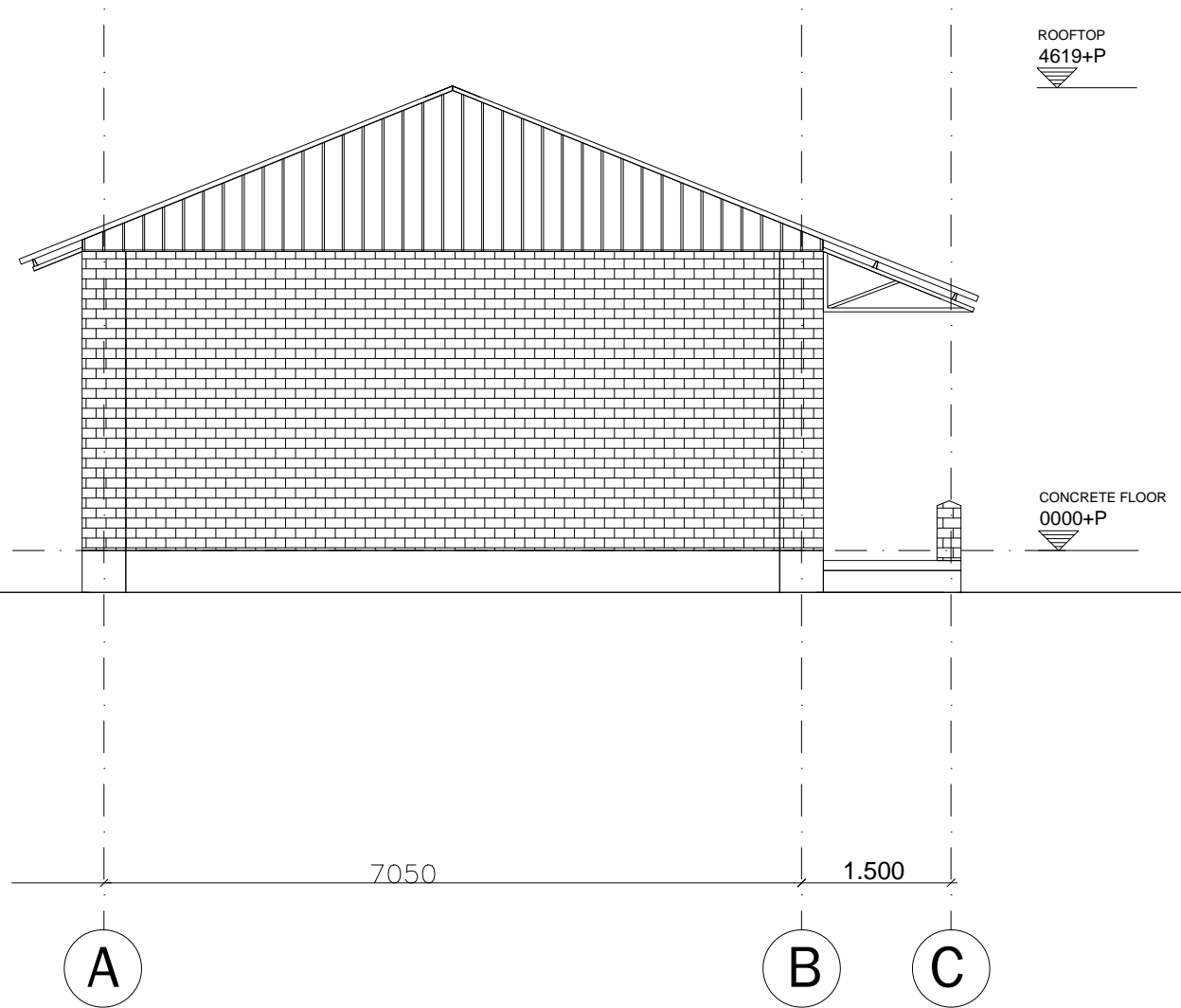
FRONT ELEVATION

- Aluzinc ridge cap 30 \* 30 cm.
- Aluzinc longspan profiled roofing sheets
- Aluzinc longspan profiled roofing sheets used as finishing of truss
- Steel windows; S/T/ 30x30x1,5 mm., iron rods Ø10mm ctc 150 mm.
- Steel doors; S/T 30x30x1,5 mm., steel plate 0,9 mm.
- Walls, Earth blocks (coated colourless)
- Columns made out of earth blocks and filled with reinforced concrete
- Veranda wall, Earth blocks (coated colourless)
- Plastered wall up to P=0.00, (coated colourless)



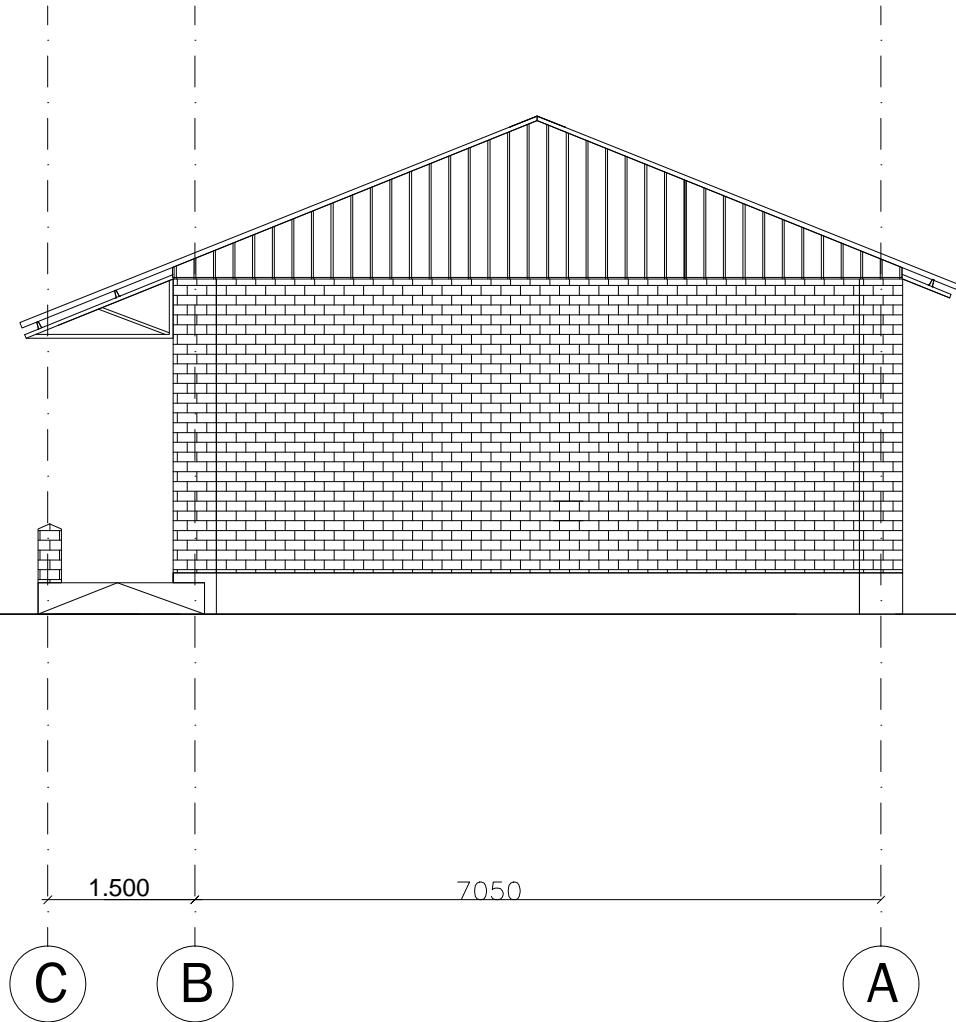
REAR ELEVATION

- Aluzinc ridge cap 30 \* 30 cm.
- Aluzinc longspan profiled roofing sheets
- Aluzinc longspan profiled roofing sheets used as finishing of truss
- Steel windows; S/T/ 30x30x1,5 mm., iron rods Ø10mm ctc 150 mm.
- Steel doors; S/T 30x30x1,5 mm., steel plate 0,9 mm.
- Walls, Earth blocks (coated colourless)
- Columns made out of earth blocks and filled with reinforced concrete
- Veranda wall, Earth blocks (coated colourless)
- Plastered wall up to P=0.00, (coated colourless)

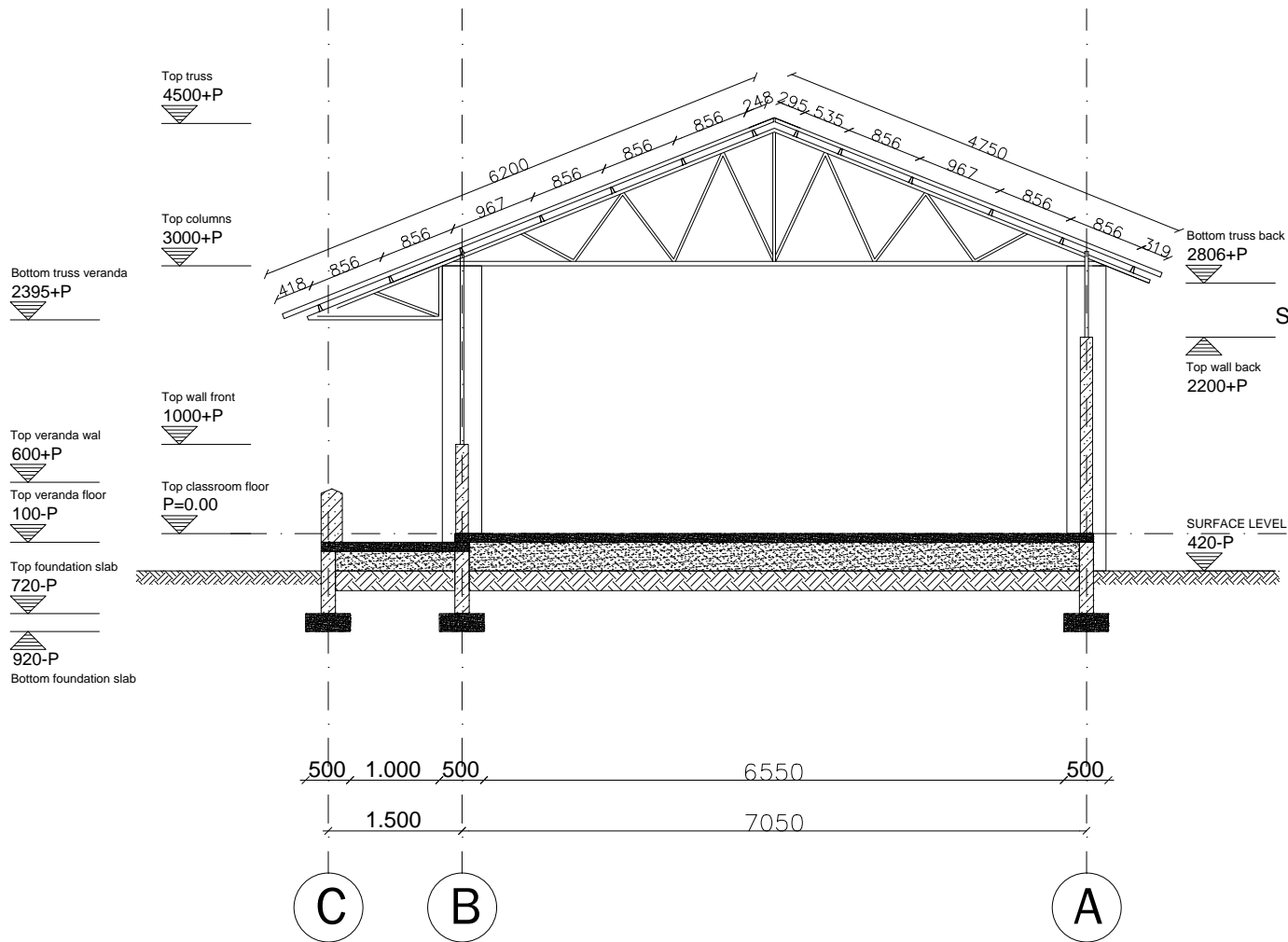


# LEFT ELEVATION

- Aluzinc ridge cap 30 \* 30 cm.
- Aluzinc longspan profiled roofing sheets
- Aluzinc longspan profiled roofing sheets used as finishing of truss
- Steel windows; S/T/ 30x30x1,5 mm., iron rods Ø10mm ctc 150 mm.
- Steel doors; S/T 30x30x1,5 mm., steel plate 0,9 mm.
- Walls, Earth blocks (coated colourless)
- Columns made out of earth blocks and filled with reinforced concrete
- Veranda wall, Earth blocks (coated colourless)
- Plastered wall up to P=0.00, (coated colourless)

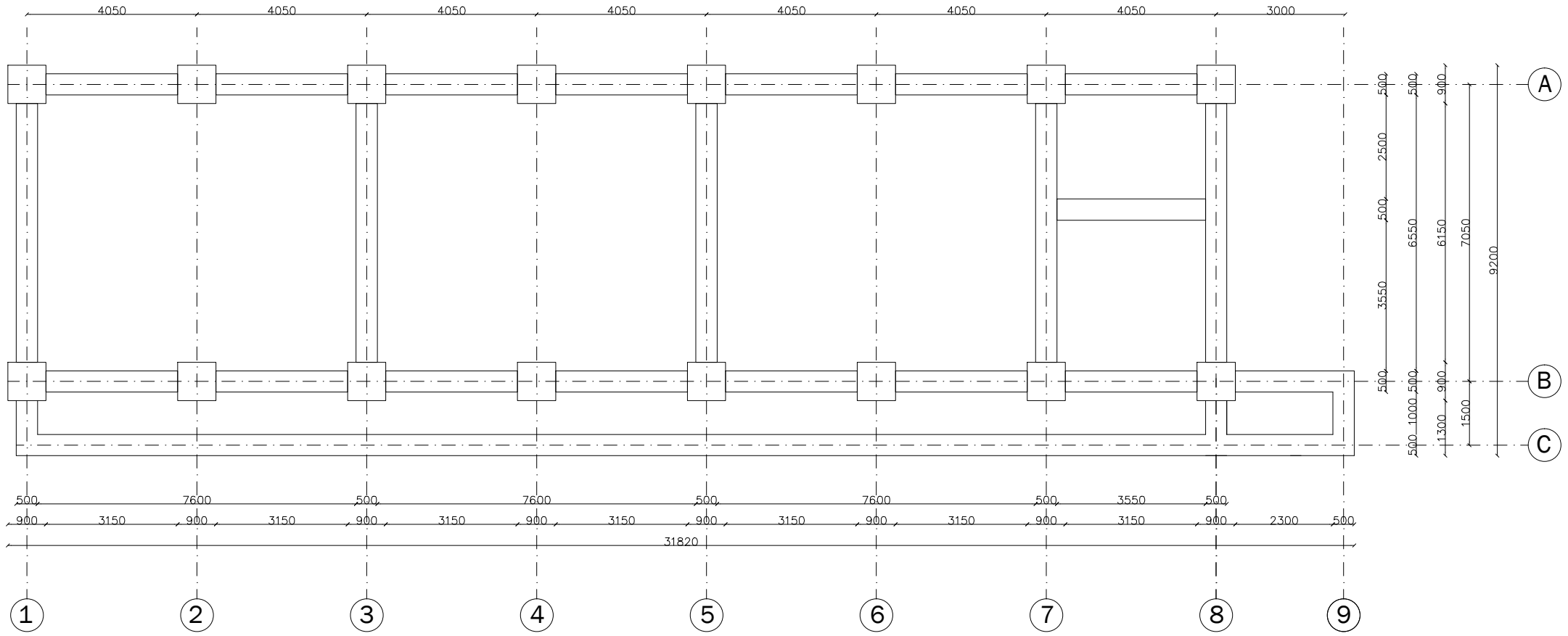


**RIGHT ELEVATION**



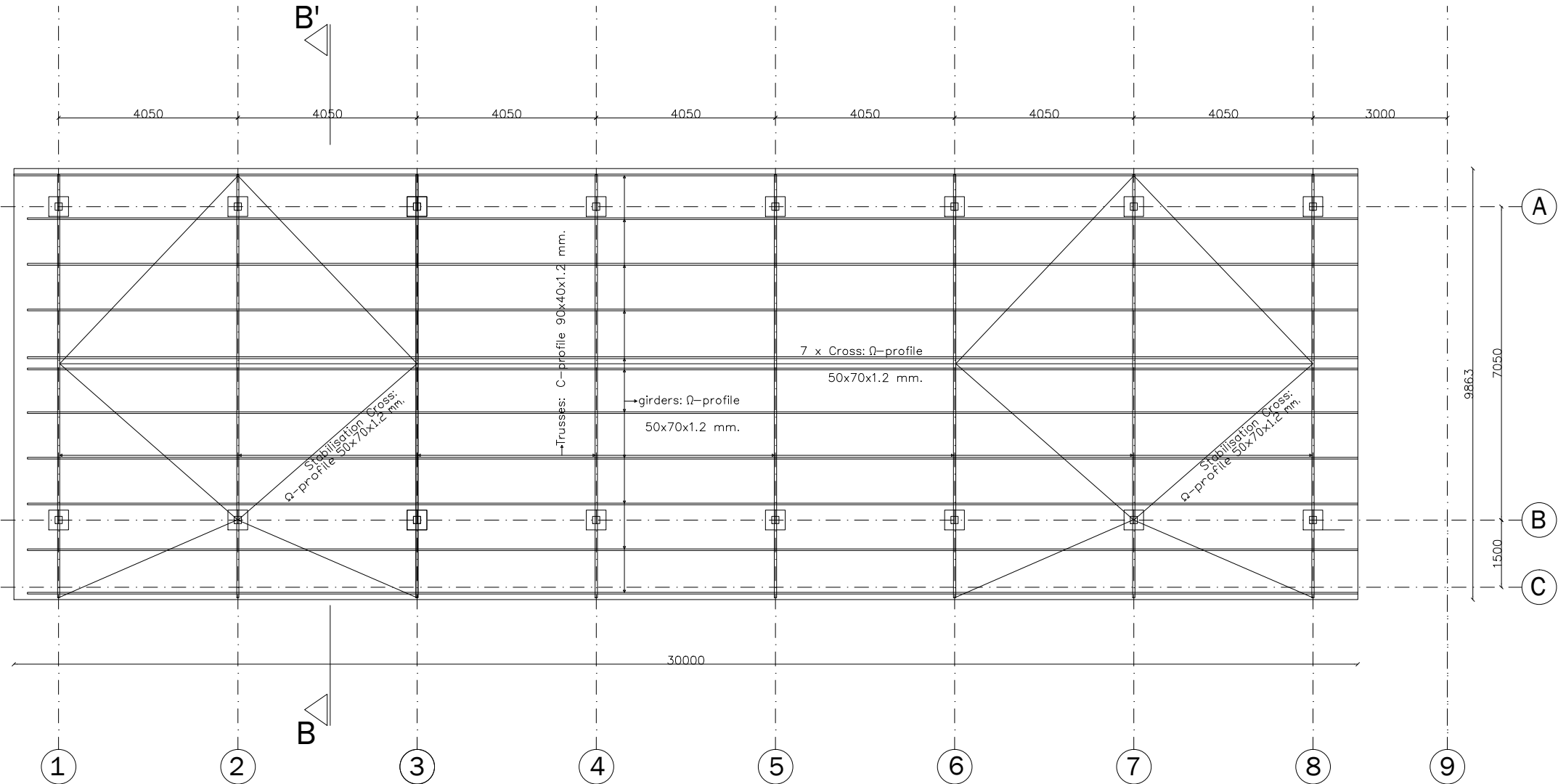
SECTION B-B'

- Aluzinc ridge cap 30 \* 30 cm.
- Aluzinc longspan profiled roofing sheets
- Aluzinc longspan profiled roofing sheets used as finishing of truss
- Steel windows; S/T/ 30x30x1,5 mm., iron rods Ø10mm ctc 150 mm.
- Steel doors; S/T 30x30x1,5 mm., steel plate 0,9 mm.
- Walls, Earth blocks (coated colourless)
- Columns made out of earth blocks and filled with reinforced concrete
- Veranda wall, Earth blocks (coated colourless)
- Plastered wall up to P=0.00, (coated colourless)



FOUNDATION PLAN





ROOF PLAN

# SPECIFICATIONS:

Exterior walls:

Earth blocks, unplastered, sealed with colorless coating against water.

Interior walls:

Earth blocks, unplastered, sealed with colorless coating.

Floors interior (P):

concrete 100mm, reinforced with BRC 5mm, ctc 200mm, porcelin floor tiles

Floors veranda (100-P):

concrete 100mm, reinforced with BRC 5mm, ctc 200mm, porcelin floortiles

Foundation walls (720-P to 200-P):

hollow concrete blocks, 160x200x400mm., filled with concrete

Galvanised steel roof construction uncoated

Aluzinc roof sheets uncoated or coated, color to be decided

Steel windows, doors:

2 coats of red oxide anti corrosion oil paint, if desired 1 coat of gloss oil paint, color to be decided